

WEAR PROFILE AND WEAR TREND REPORT



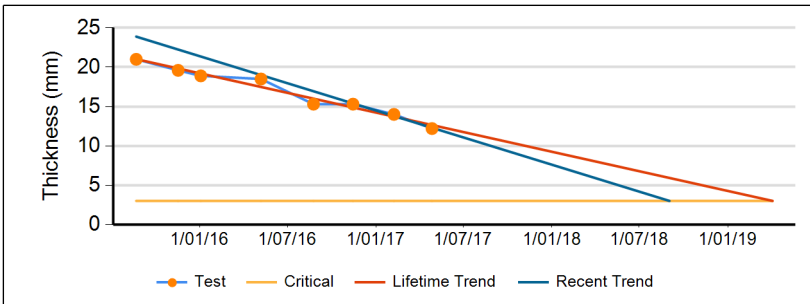
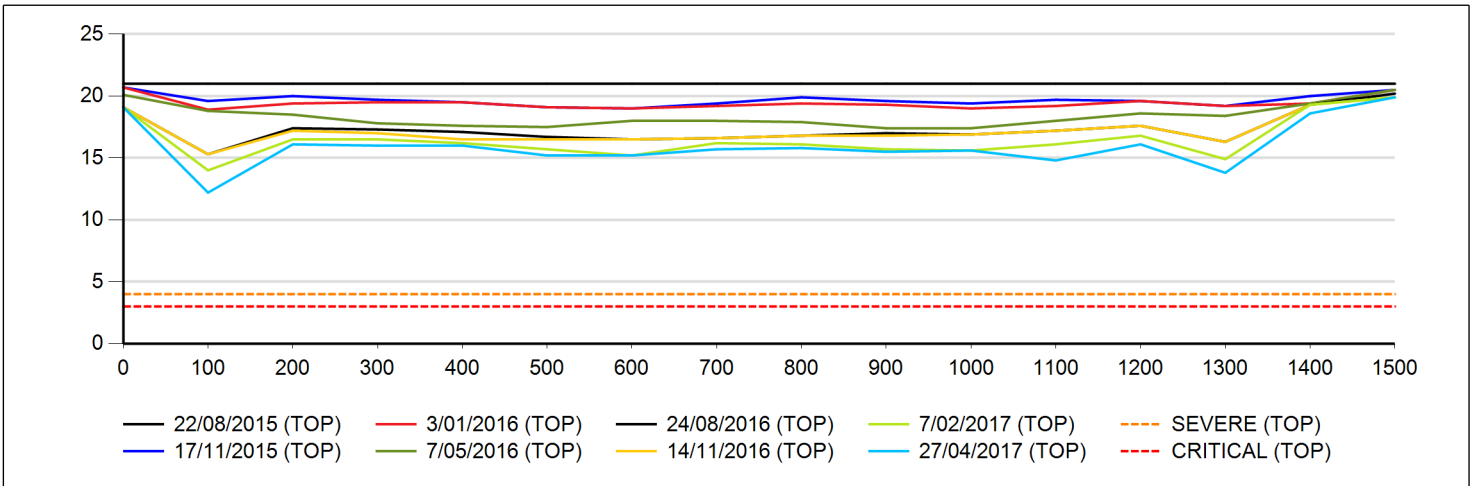
Status: Installed ; Show on profile ? : All readings

Show which tests ? : Valid tests only ; Show test results ? : False

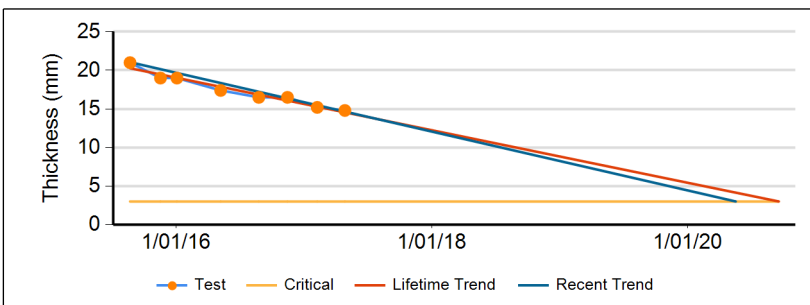
Mine A, INFLOW, Conveyors, CV001 (Top)

Specification	#	Wear Surface	Length	Install Date	Removal Date	Last Test (min)	Calculated "LC" or "RC"			Scheduled "SC"		Skirt Wear
							Week Date	Partition	Changeout	Week Date	Shut	
ST1000 1500 19.0+7.0 UAR	1	Top	915	22/08/2015		12.20	36	LHS	RC	24		LHS,RHS
						27/04/2017	2/09/2018			11/06/2018		

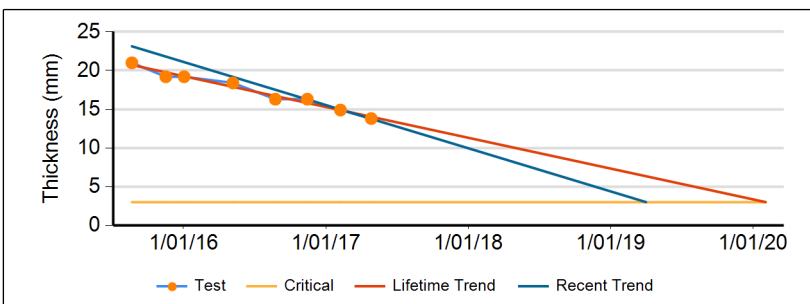
Comments :



Wear Rates Top (LHS: 0-200 mm)			
MIN: 12.2 mm	Critical C/Out Date	Current Wear Rate	Previous Wear Rate
Lifetime ("LC")	4/04/2019	0.414 mm/mth	0.396 mm/mth
Last 3 Results ("RC")	2/09/2018	0.494 mm/mth	0.278 mm/mth



Wear Rates Top (CTR: 201-1299 mm)			
MIN: 14.8 mm	Critical C/Out Date	Current Wear Rate	Previous Wear Rate
Lifetime ("LC")	18/09/2020	0.295 mm/mth	0.306 mm/mth
Last 3 Results ("RC")	18/05/2020	0.316 mm/mth	0.258 mm/mth

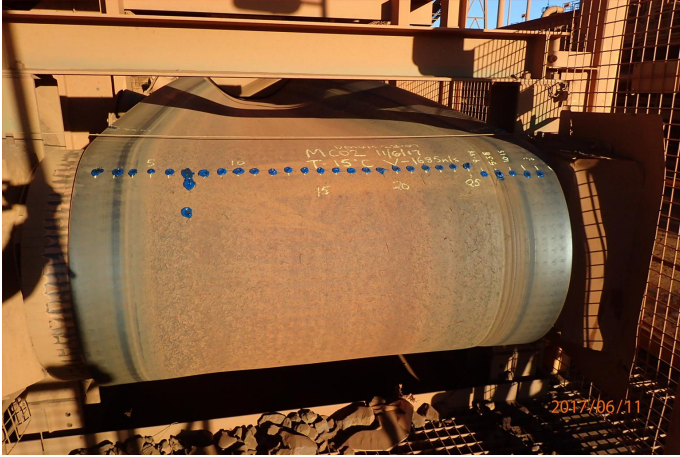


Wear Rates Top (RHS: 1300-1500 mm)			
MIN: 13.8 mm	Critical C/Out Date	Current Wear Rate	Previous Wear Rate
Lifetime ("LC")	3/02/2020	0.336 mm/mth	0.327 mm/mth
Last 3 Results ("RC")	2/04/2019	0.415 mm/mth	0.277 mm/mth

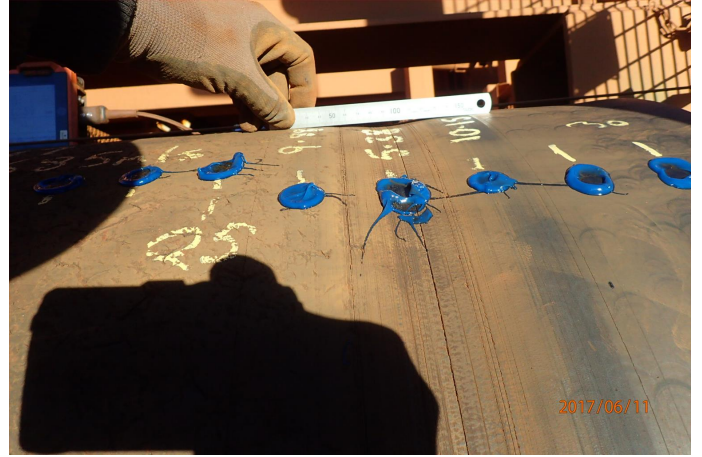
WEAR PROFILE AND WEAR TREND REPORT

Status: Installed ; Show on profile ? : All readings

Show which tests ? : Valid tests only ; Show test results ? : False



Caption: P6111871.JPG



Caption: P6111869.JPG

WEAR PROFILE AND WEAR TREND REPORT



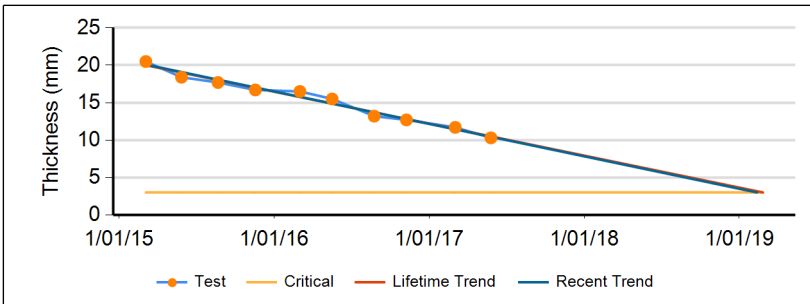
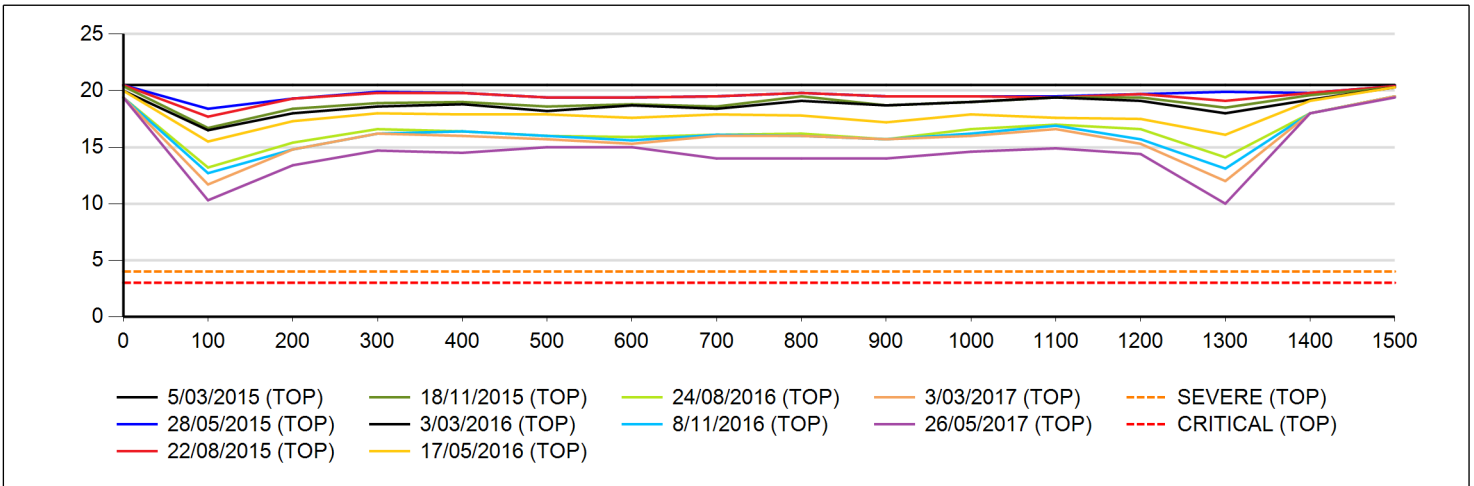
Status: Installed ; Show on profile ? : All readings

Show which tests ? : Valid tests only ; Show test results ? : False

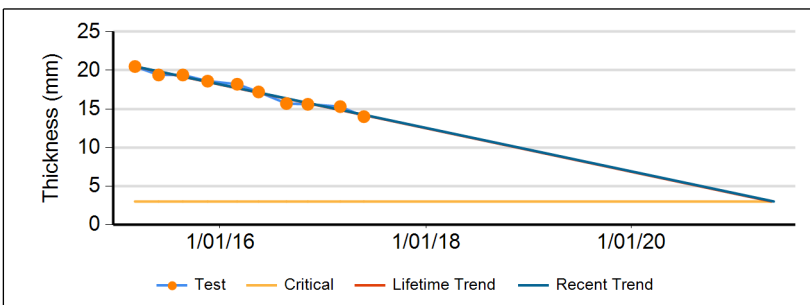
Mine A, INFLOW, Conveyors, CV002 (Top)

Specification	#	Wear Surface	Length	Install Date	Removal Date	Last Test (min)	Calculated "LC" or "RC"			Scheduled "SC"		Skirt Wear
							Week Date	Partition	Changeout	Week Date	Shut	
ST1000 1500 19.0+7.0 UAR	1	Top	915	5/03/2015		10.00	37	RHS	RC	38		LHS,RHS
						26/05/2017	15/09/2018			19/09/2018		

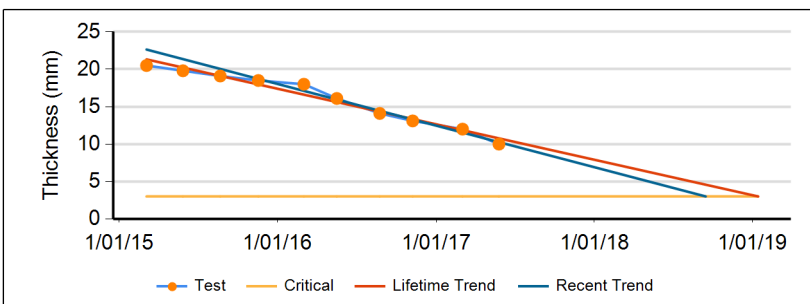
Comments :



Wear Rates Top (LHS: 0-200 mm)			
MIN: 10.3 mm	Critical C/Out Date	Current Wear Rate	Previous Wear Rate
Lifetime ("LC")	26/02/2019	0.366 mm/mth	0.361 mm/mth
Last 3 Results ("RC")	12/02/2019	0.369 mm/mth	0.291 mm/mth



Wear Rates Top (CTR: 201-1299 mm)			
MIN: 14 mm	Critical C/Out Date	Current Wear Rate	Previous Wear Rate
Lifetime ("LC")	13/05/2021	0.235 mm/mth	0.23 mm/mth
Last 3 Results ("RC")	21/05/2021	0.234 mm/mth	0.082 mm/mth



Wear Rates Top (RHS: 1300-1500 mm)			
MIN: 10 mm	Critical C/Out Date	Current Wear Rate	Previous Wear Rate
Lifetime ("LC")	14/01/2019	0.377 mm/mth	0.359 mm/mth
Last 3 Results ("RC")	15/09/2018	0.412 mm/mth	0.343 mm/mth

WEAR PROFILE AND WEAR TREND REPORT

Status: Installed ; Show on profile ?: All readings

Show which tests ?: Valid tests only ; Show test results ?: False



Caption: P4240086.JPG



Caption: P4240088.JPG

WEAR PROFILE AND WEAR TREND REPORT



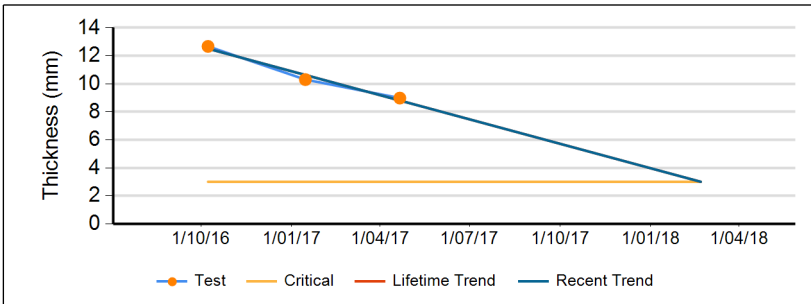
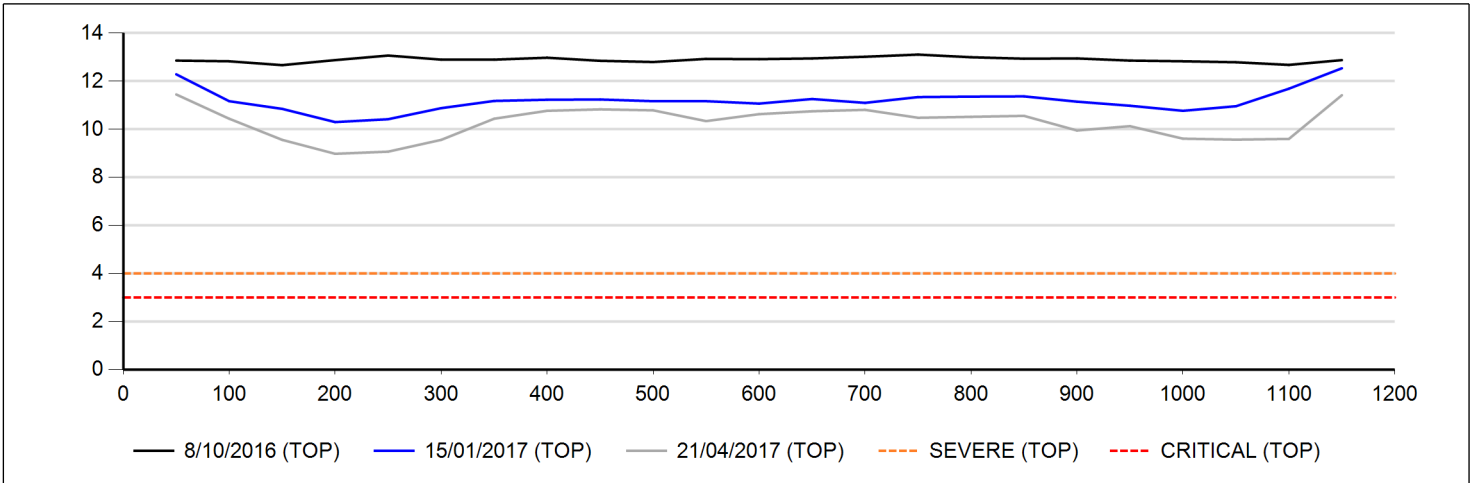
Status: Installed ; Show on profile ?: All readings

Show which tests ?: Valid tests only ; Show test results ?: False

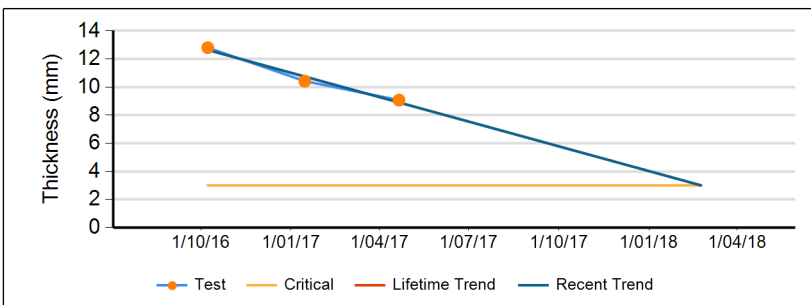
Mine A, INFLOW, Conveyors, CV01 Fines (Top)

Specification	#	Wear Surface	Length	Install Date	Removal Date	Last Test (min)	Calculated "LC" or "RC"			Scheduled "SC"		Skirt Wear
							Week Date	Partition	Changeout	Week Date	Shut	
1200 x ST1000 x 13/5 1200 13.0+3.0 Survivor	9999	Top	718	8/10/2016		8.98 21/04/2017	8 21/02/2018	LHS	RC			

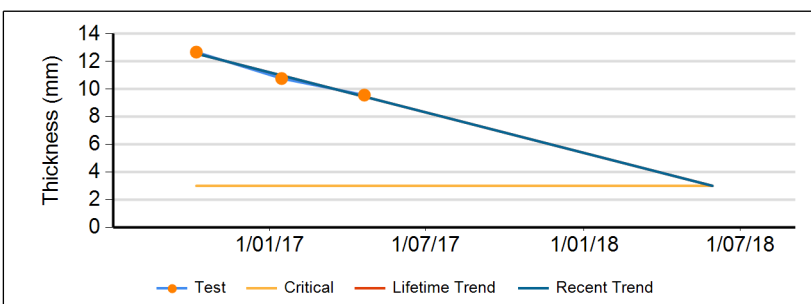
Comments :



Wear Rates Top (LHS: 0-240 mm)			
MIN: 8.98 mm	Critical C/Out Date	Current Wear Rate	Previous Wear Rate
Lifetime ("LC")	21/02/2018	0.586 mm/mth	0.728 mm/mth
Last 3 Results ("RC")	21/02/2018	0.586 mm/mth	0.728 mm/mth



Wear Rates Top (CTR: 241-959 mm)			
MIN: 9.07 mm	Critical C/Out Date	Current Wear Rate	Previous Wear Rate
Lifetime ("LC")	23/02/2018	0.592 mm/mth	0.731 mm/mth
Last 3 Results ("RC")	23/02/2018	0.592 mm/mth	0.731 mm/mth



Wear Rates Top (RHS: 960-1200 mm)			
MIN: 9.57 mm	Critical C/Out Date	Current Wear Rate	Previous Wear Rate
Lifetime ("LC")	30/05/2018	0.491 mm/mth	0.587 mm/mth
Last 3 Results ("RC")	30/05/2018	0.491 mm/mth	0.587 mm/mth

WEAR PROFILE AND WEAR TREND REPORT



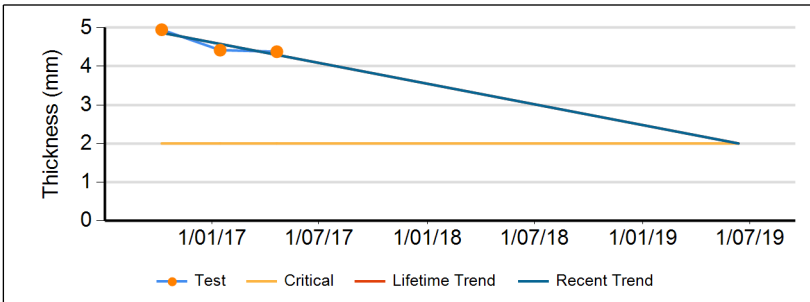
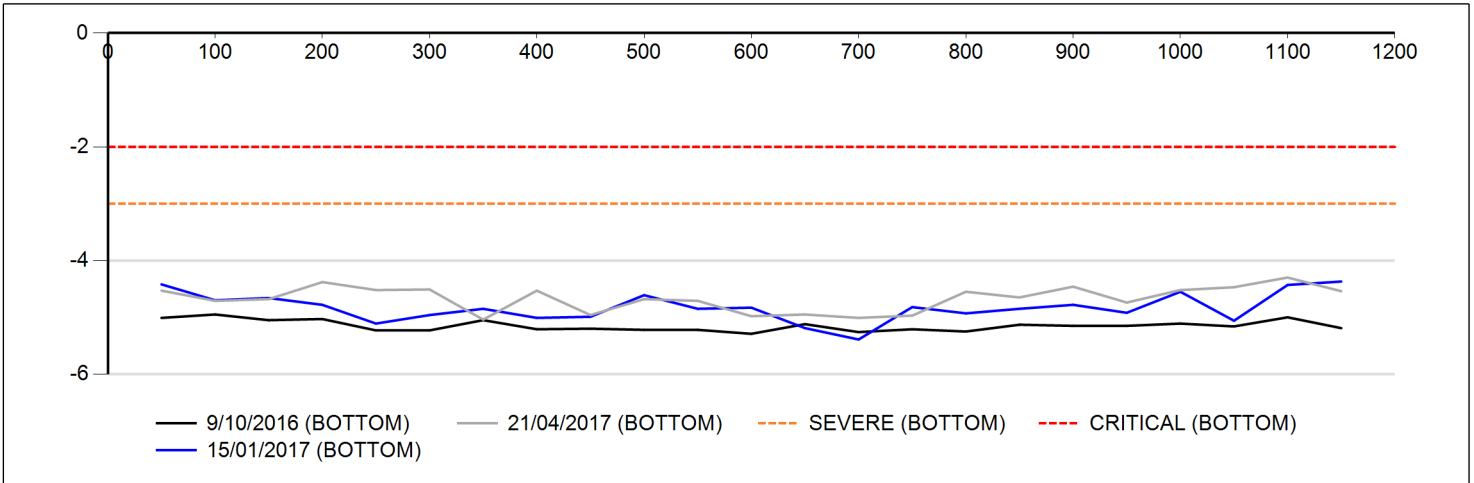
Status: Installed ; Show on profile ?: All readings

Show which tests ?: Valid tests only ; Show test results ?: False

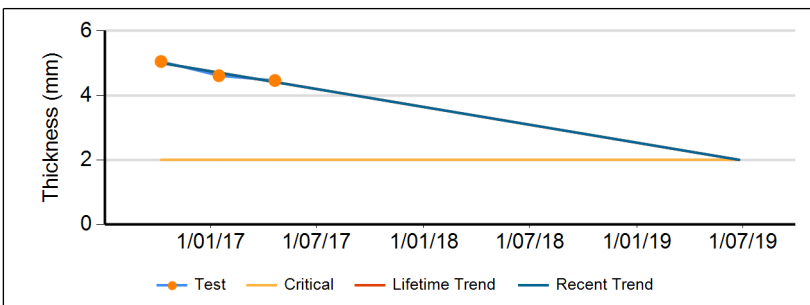
Mine A, INFLOW, Conveyors, CV01 Fines (Bottom)

Specification	#	Wear Surface	Length	Install Date	Removal Date	Last Test (min)	Calculated "LC" or "RC"		Scheduled "SC"		Skirt Wear	
							Week Date	Partition	Changeout	Week Date		Shut
1200 x ST1000 x 13/5 1200 13.0+3.0 Survivor	9999	Bottom	718	8/10/2016		4.30 21/04/2017	52 24/12/2018	RHS	RC			RHS

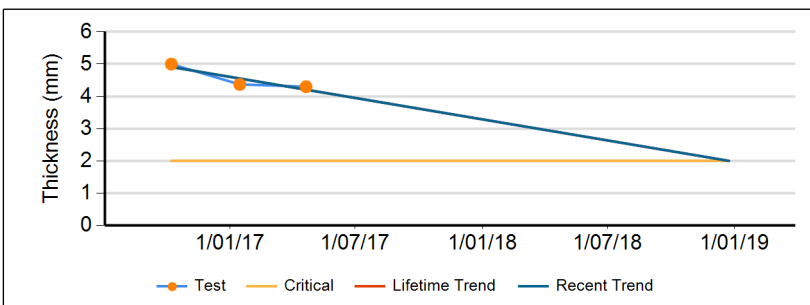
Comments :



Wear Rates Bottom (LHS: 0-240 mm)			
MIN: 4.38 mm	Critical C/Out Date	Current Wear Rate	Previous Wear Rate
Lifetime ("LC")	12/06/2019	0.092 mm/mth	0.163 mm/mth
Last 3 Results ("RC")	12/06/2019	0.092 mm/mth	0.163 mm/mth



Wear Rates Bottom (CTR: 241-959 mm)			
MIN: 4.46 mm	Critical C/Out Date	Current Wear Rate	Previous Wear Rate
Lifetime ("LC")	25/06/2019	0.094 mm/mth	0.135 mm/mth
Last 3 Results ("RC")	25/06/2019	0.094 mm/mth	0.135 mm/mth



Wear Rates Bottom (RHS: 960-1200 mm)			
MIN: 4.3 mm	Critical C/Out Date	Current Wear Rate	Previous Wear Rate
Lifetime ("LC")	24/12/2018	0.113 mm/mth	0.193 mm/mth
Last 3 Results ("RC")	24/12/2018	0.113 mm/mth	0.193 mm/mth