

WEAR PROFILE AND WEAR TREND REPORT



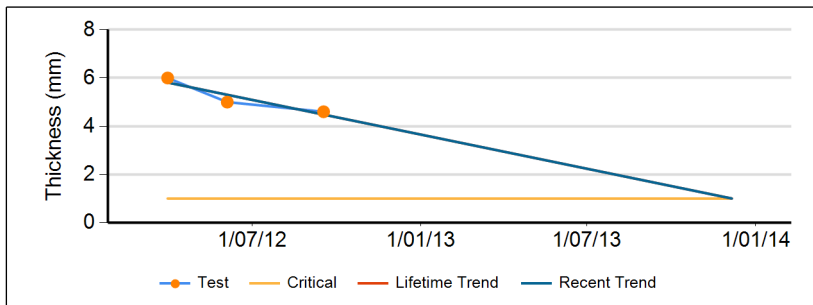
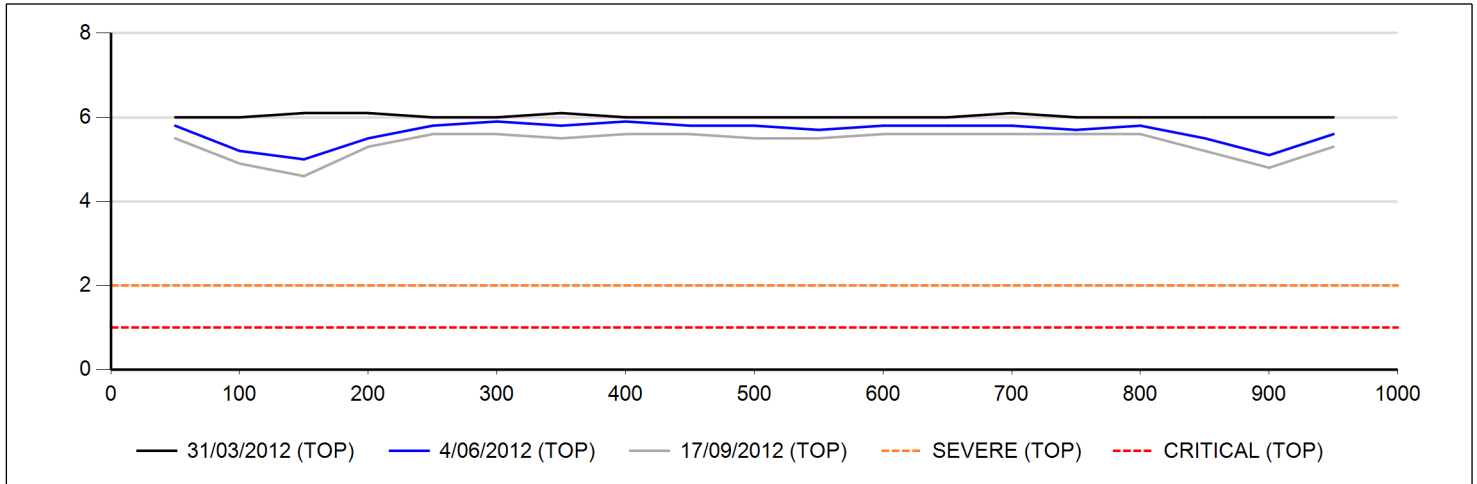
Status: Removed ; Show on profile ? : All readings

Show which tests ? : Valid tests only ; Show test results ? : False

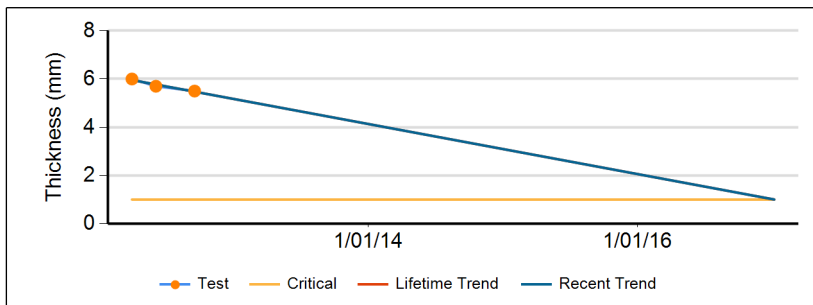
Mine Operations, Raw Coal, Conveyors, CV101 (Top)

Specification	#	Length	Install Date	Removal Date	Hardness	Last Test {min}	Calculated "LC" or "RC"		Scheduled "SC"			Skirt Wear
							Week Date	Partition	Changeout	Week Date	Shut	
PN640/4 1000 6.0+2.0 M Grade Fenner (01)	1	244	13 31/03/2012	40 1/10/2012		4.60 17/09/2012	49 6/12/2013	LHS	RC			LHS,RHS

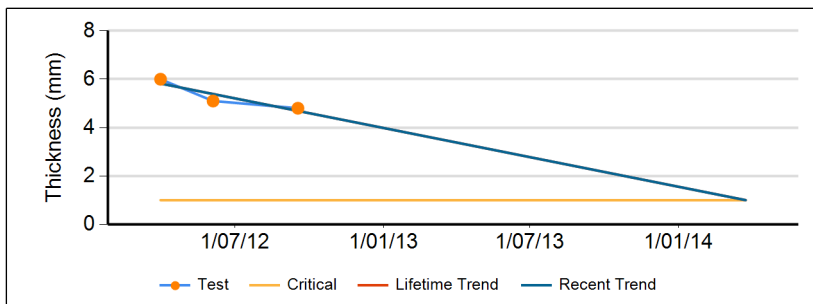
Comments : Continued wear in skirt line.



Wear Rates Top (LHS: 0-200 mm)			
MIN: 4.6 mm	Critical C/Out Date	Current Wear Rate	Previous Wear Rate
Lifetime ("LC")	6/12/2013	0.247 mm/mth	0.468 mm/mth
Last 3 Results ("RC")	6/12/2013	0.247 mm/mth	0.468 mm/mth



Wear Rates Top (CTR: 201-799 mm)			
MIN: 5.5 mm	Critical C/Out Date	Current Wear Rate	Previous Wear Rate
Lifetime ("LC")	7/01/2017	0.087 mm/mth	0.14 mm/mth
Last 3 Results ("RC")	7/01/2017	0.087 mm/mth	0.14 mm/mth



Wear Rates Top (RHS: 800-1000 mm)			
MIN: 4.8 mm	Critical C/Out Date	Current Wear Rate	Previous Wear Rate
Lifetime ("LC")	25/03/2014	0.21 mm/mth	0.421 mm/mth
Last 3 Results ("RC")	25/03/2014	0.21 mm/mth	0.421 mm/mth

WEAR PROFILE AND WEAR TREND REPORT



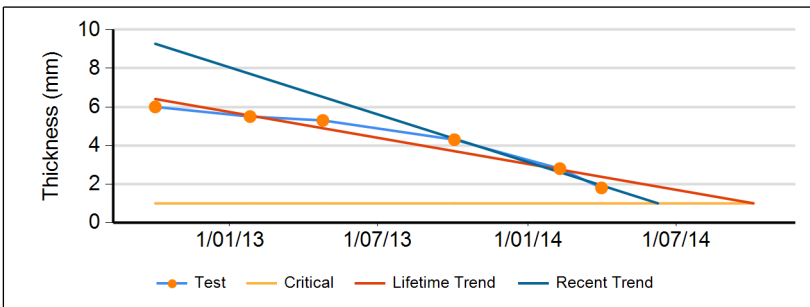
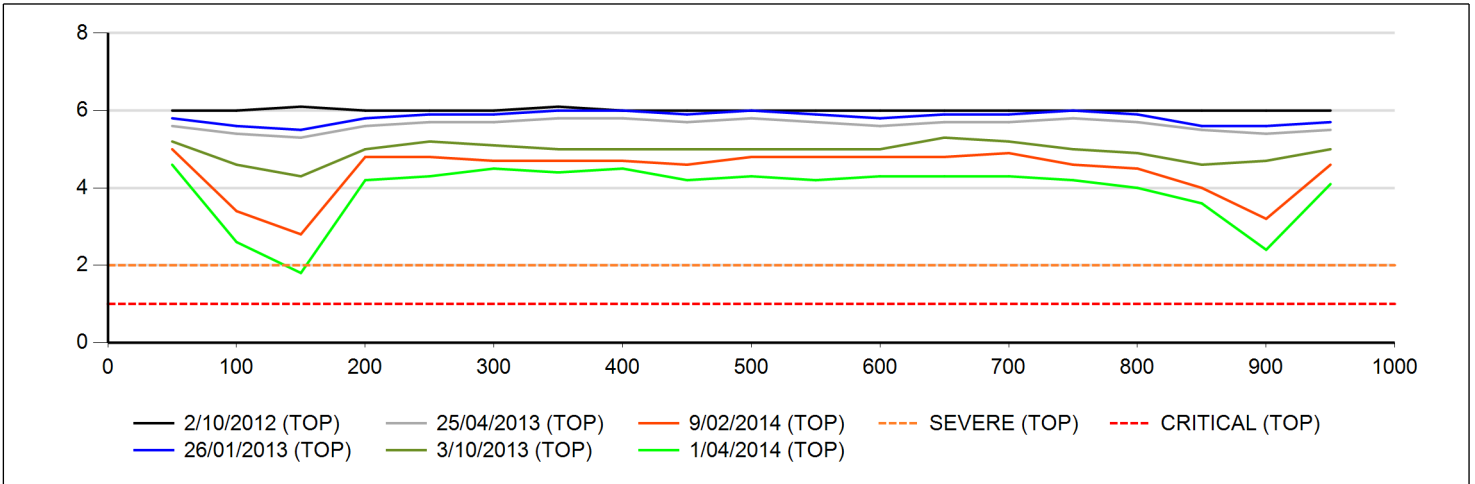
Status: Removed ; Show on profile ? : All readings

Show which tests ? : Valid tests only ; Show test results ? : False

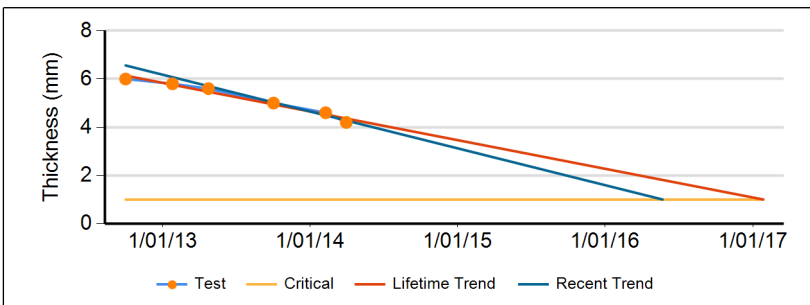
Mine Operations, Raw Coal, Conveyors, CV101 (Top)

Specification	#	Length	Install Date	Removal Date	Hardness	Last Test {min}	Calculated "LC" or "RC"		Scheduled "SC"		Skirt Wear
							Week Date	Partition	Changeout	Week Date	
PN640/4 1000 6.0+2.0 M Grade Fenner (02)	1	244	40 1/10/2012	14 2/04/2014		1.80 1/04/2014	24 9/06/2014	LHS	RC		LHS,RHS

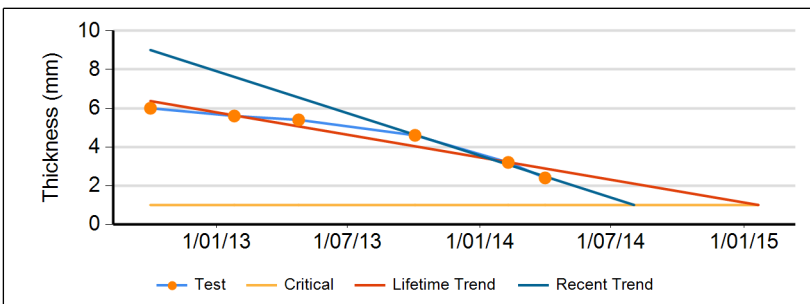
Comments : Respruce has been repaired previously and is delaminating again on the carry cover. Wear skirt lines both sides



Wear Rates Top (LHS: 0-200 mm)			
MIN: 1.8 mm	Critical C/Out Date	Current Wear Rate	Previous Wear Rate
Lifetime ("LC")	4/10/2014	0.207 mm/mth	0.18 mm/mth
Last 3 Results ("RC")	9/06/2014	0.247 mm/mth	0.21 mm/mth



Wear Rates Top (CTR: 201-799 mm)			
MIN: 4.2 mm	Critical C/Out Date	Current Wear Rate	Previous Wear Rate
Lifetime ("LC")	27/01/2017	0.096 mm/mth	0.088 mm/mth
Last 3 Results ("RC")	23/05/2016	0.114 mm/mth	0.099 mm/mth



Wear Rates Top (RHS: 800-1000 mm)			
MIN: 2.4 mm	Critical C/Out Date	Current Wear Rate	Previous Wear Rate
Lifetime ("LC")	21/01/2015	0.181 mm/mth	0.157 mm/mth
Last 3 Results ("RC")	2/08/2014	0.227 mm/mth	0.188 mm/mth

WEAR PROFILE AND WEAR TREND REPORT



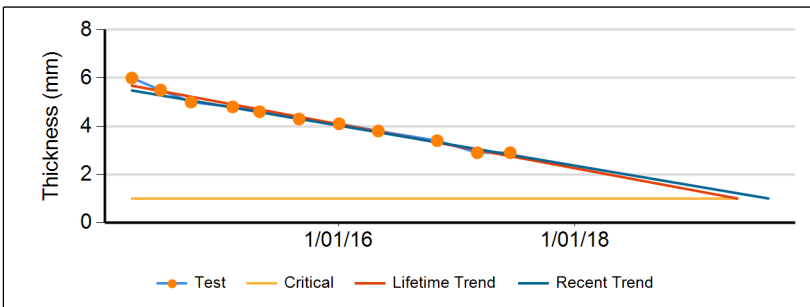
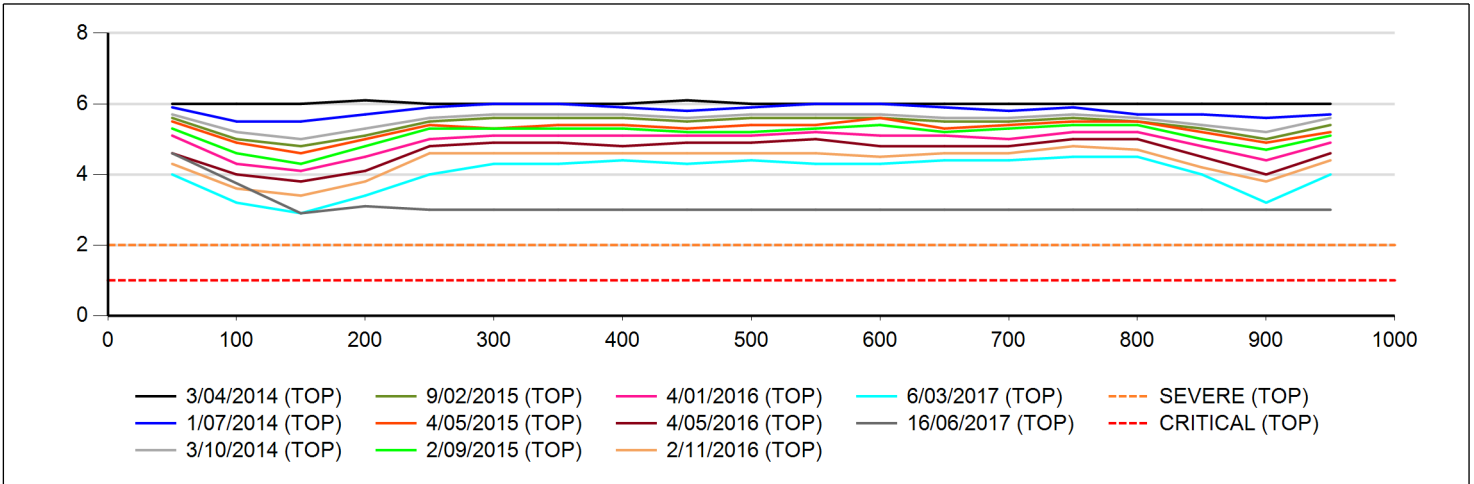
Status: Removed ; Show on profile ? : All readings

Show which tests ? : Valid tests only ; Show test results ? : False

Mine Operations, Raw Coal, Conveyors, CV101 (Top)

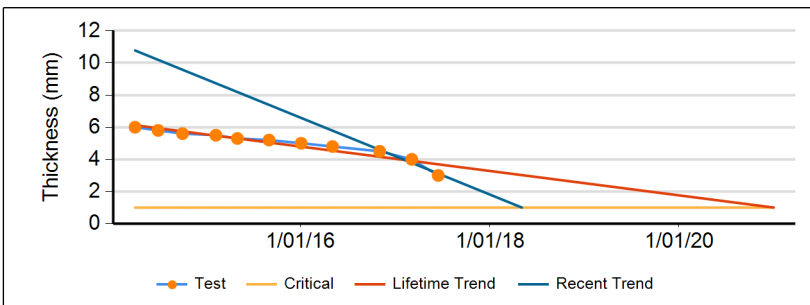
Specification	#	Length	Install Date	Removal Date	Hardness	Last Test {min}	Calculated "LC" or "RC"		Scheduled "SC"			Skirt Wear
							Week Date	Partition	Changeout	Week Date	Shut	
PN640/4 1000 6.0+2.0 M Grade Veyance (1)	1	244	14 2/04/2014	31 2/08/2017		2.90 16/06/2017	18 5/05/2018	CTR	RC			LHS,RHS

Comments : Splice delaminating



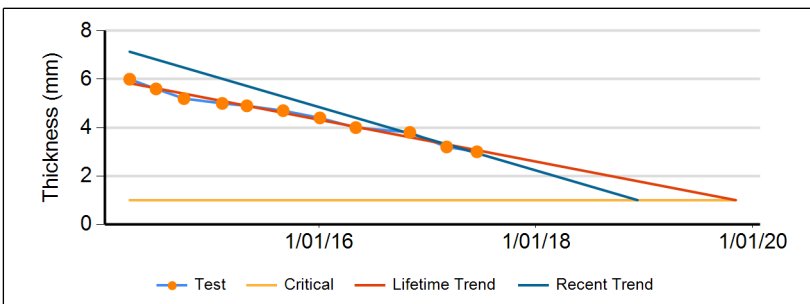
Wear Rates Top (LHS: 0-200 mm)

MIN: 2.9 mm	Critical C/Out Date	Current Wear Rate	Previous Wear Rate
Lifetime ("LC")	19/05/2019	0.081 mm/mth	0.083 mm/mth
Last 3 Results ("RC")	23/08/2019	0.077 mm/mth	0.087 mm/mth



Wear Rates Top (CTR: 201-799 mm)

MIN: 3 mm	Critical C/Out Date	Current Wear Rate	Previous Wear Rate
Lifetime ("LC")	1/01/2021	0.062 mm/mth	0.051 mm/mth
Last 3 Results ("RC")	5/05/2018	0.102 mm/mth	0.067 mm/mth



Wear Rates Top (RHS: 800-1000 mm)

MIN: 3 mm	Critical C/Out Date	Current Wear Rate	Previous Wear Rate
Lifetime ("LC")	5/11/2019	0.074 mm/mth	0.073 mm/mth
Last 3 Results ("RC")	9/12/2018	0.089 mm/mth	0.076 mm/mth